

23/00273/FUL

George Road, Bromsgrove Enterprise Park,
Bromsgrove, Worcestershire B60 3AL

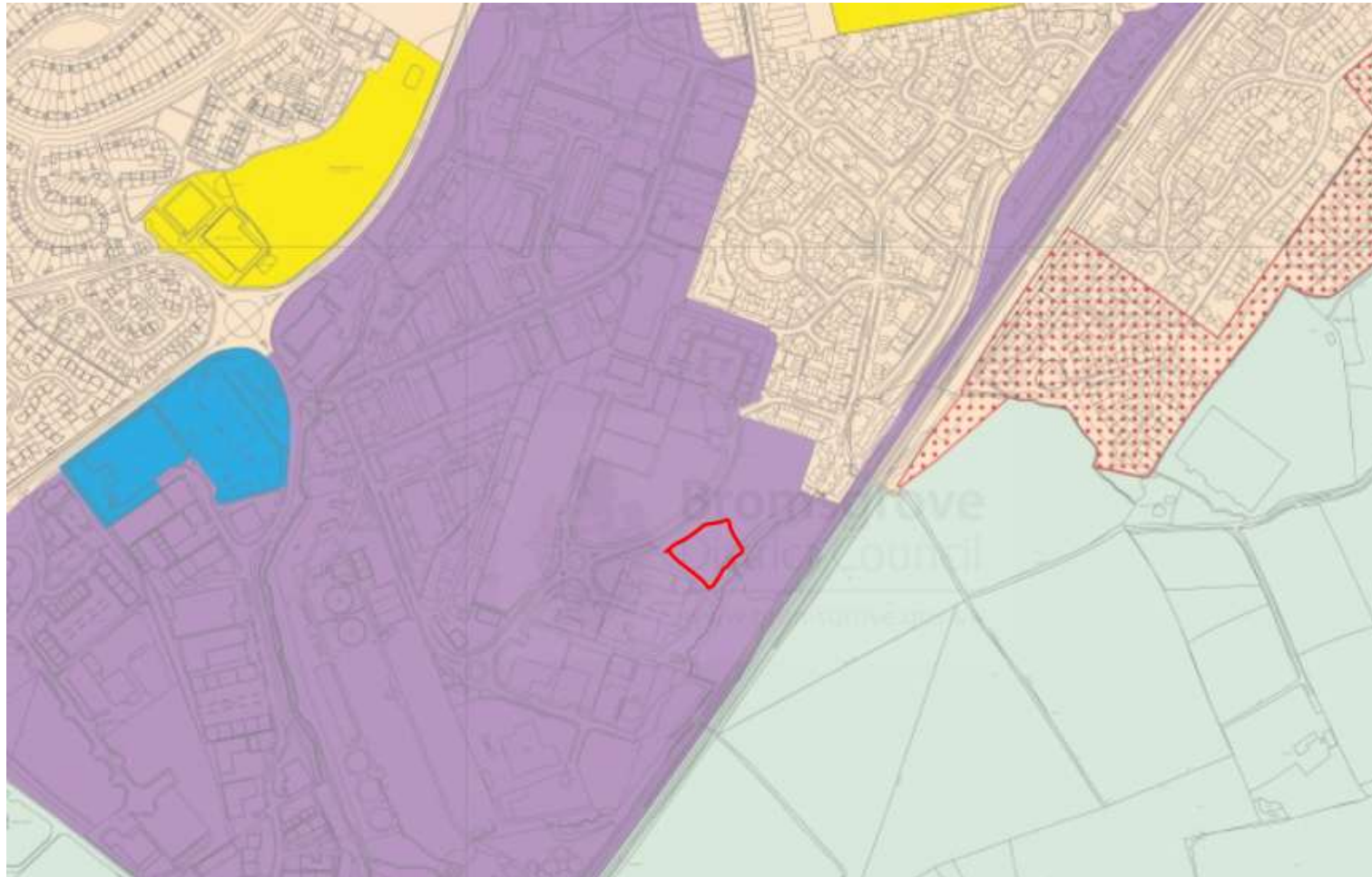
Proposal: Erection of industrial unit with storage and offices. Formation of new car park and landscaping

Recommendation: Approval

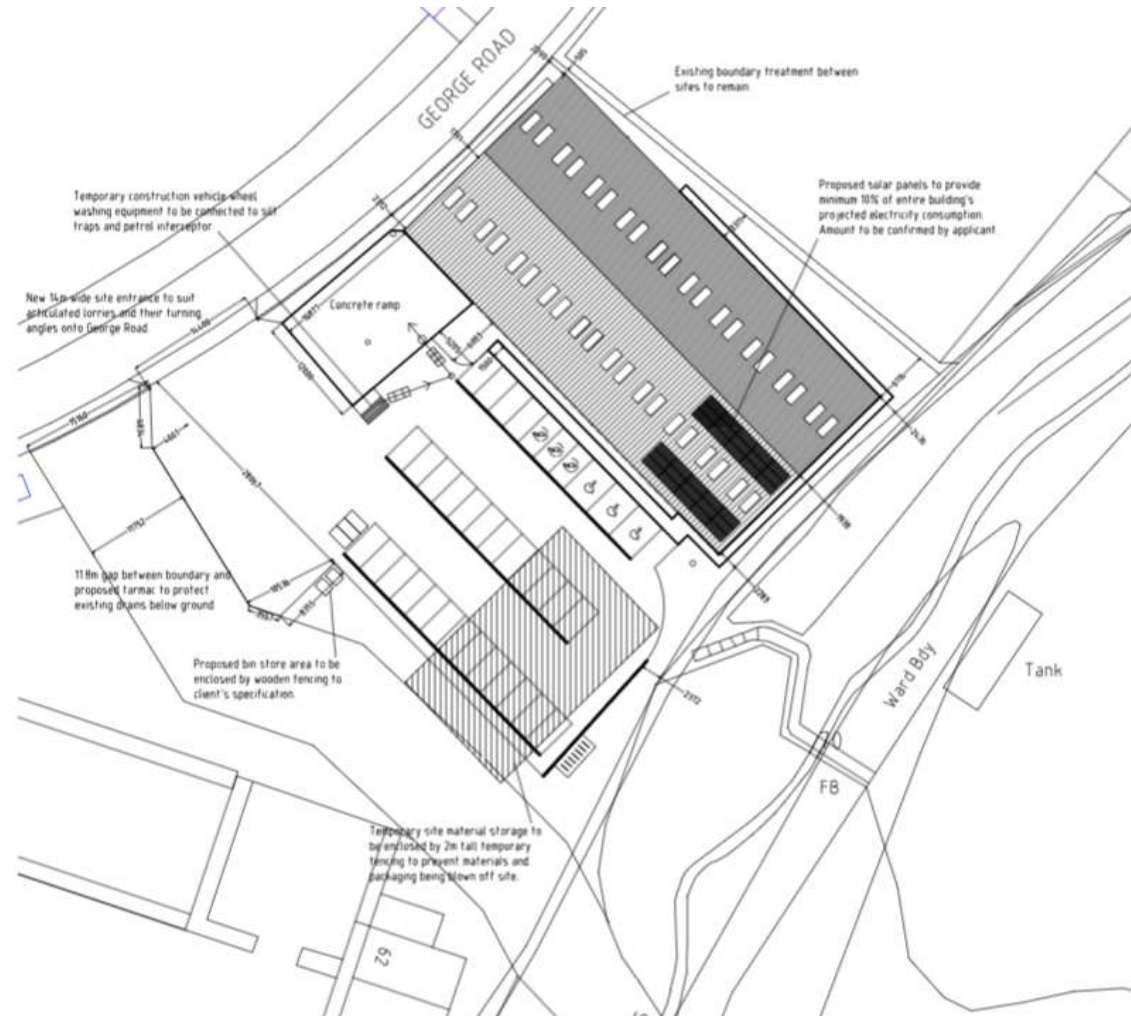
Site Location Plan



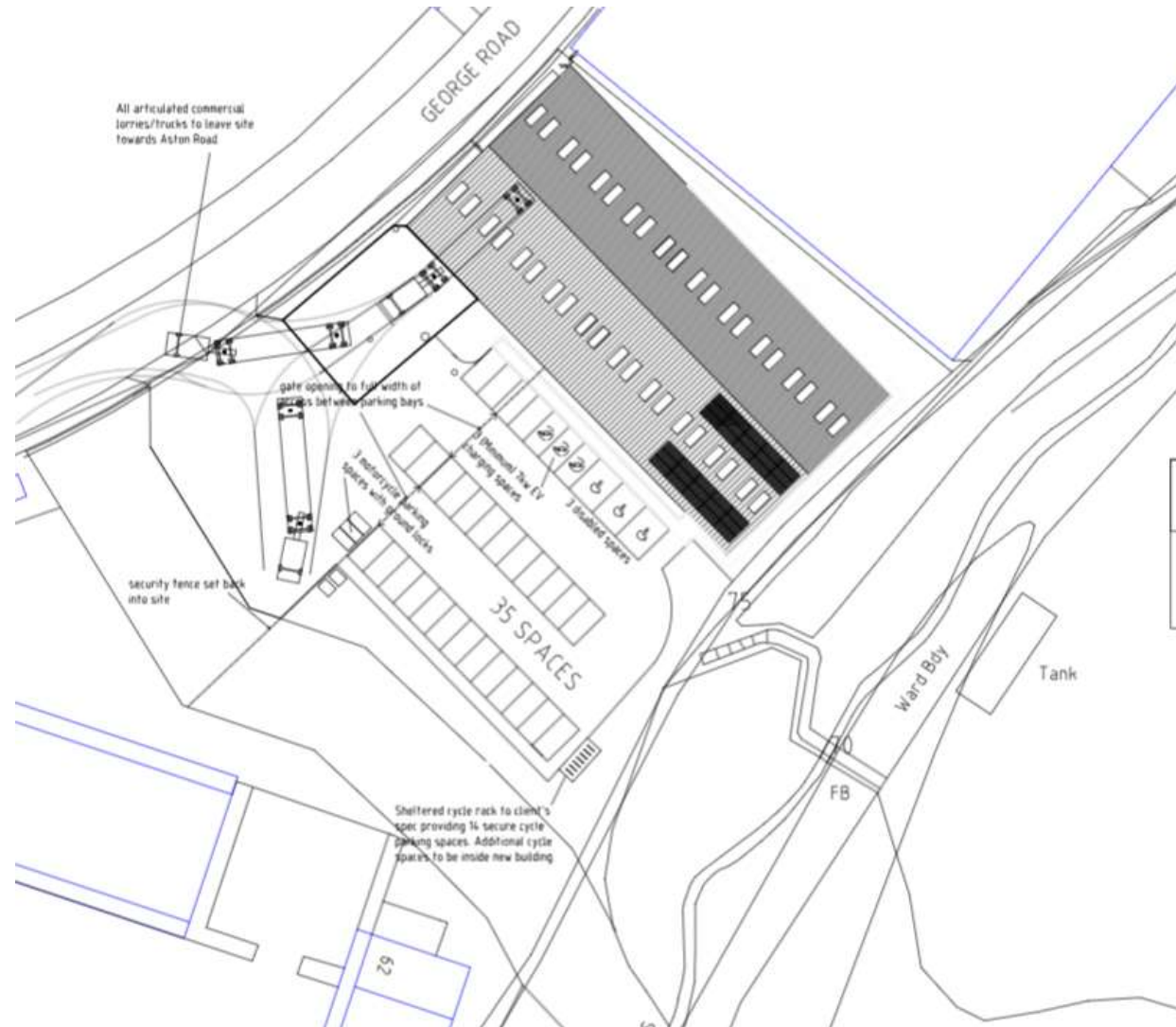
Bromsgrove District Plan Proposals Map



Proposed site plan



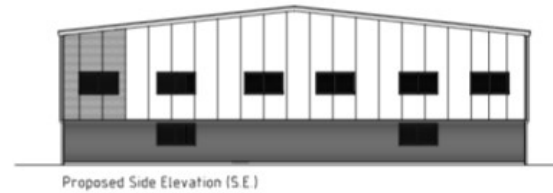
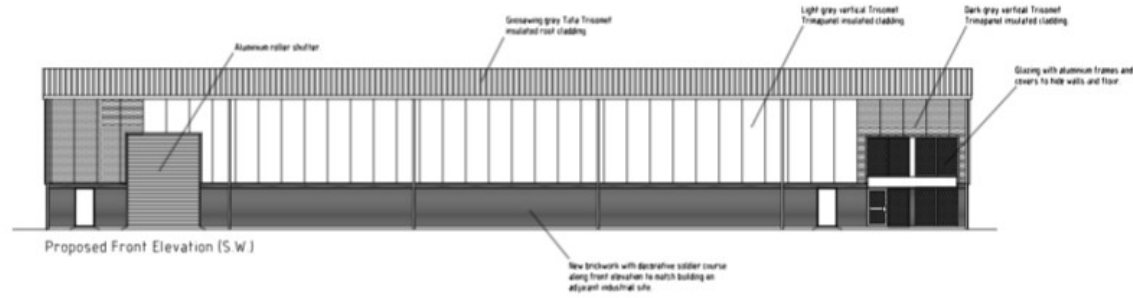
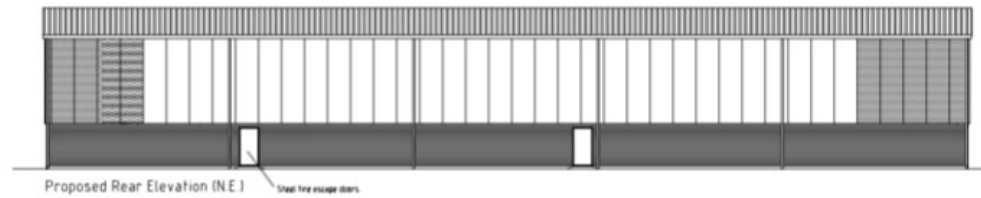
Parking Plan



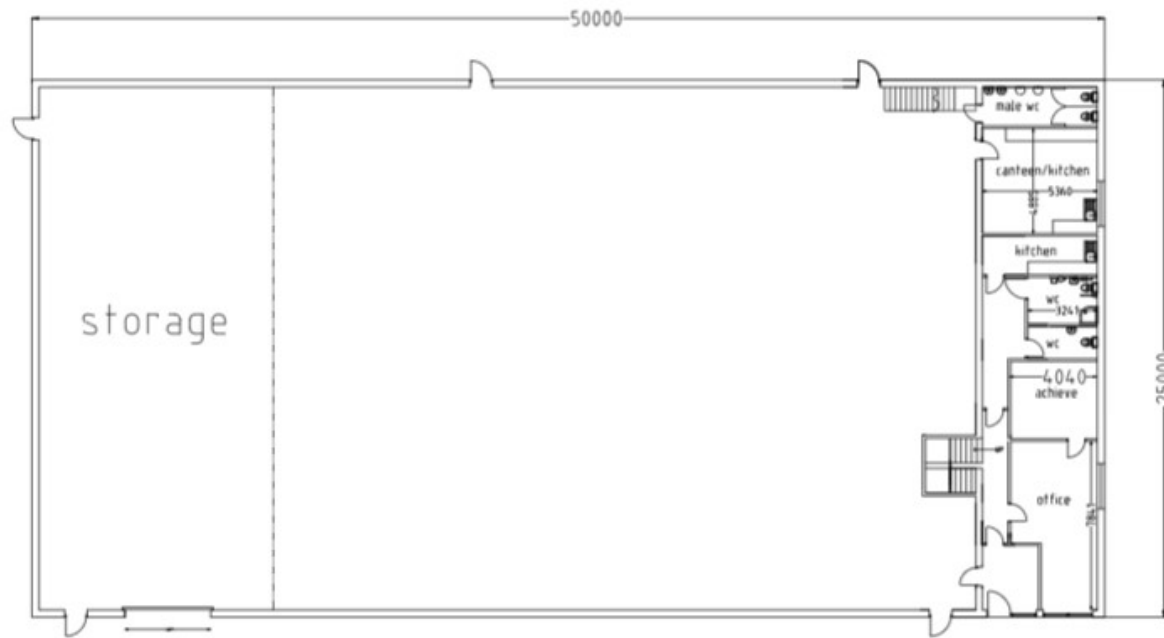
Landscaping Plan



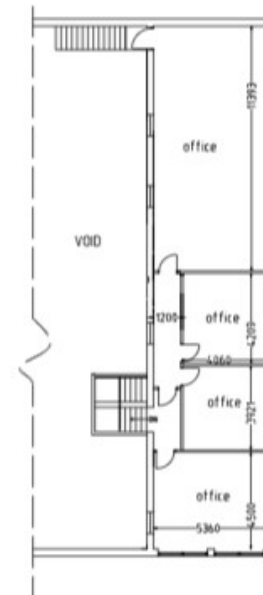
Elevations



Floor Plans



GROUND FLOOR



FIRST FLOOR

Site photos



Building to South



Building to North

Site Photos



Site from George Road

Construction opposite site

